

SPECIFICATIONS:

Power Input:

TI17C:

Voltage: 115/230 Vac $\pm 10\%$, 50/60 Hz

Current: 0.160/0.080 Amp AC

TI18C:

Voltage: 24 Vdc $\pm 10\%$. Current: 0.5 Amp DC

Tension Output:

0 to 10 Vdc @ 5 mA, OR 4 to 20 mA (optional),
jumper selectable, isolated

0 to 1mA damped, for optional tension meter, isolated

Transducer Voltage Supply:

5 Vdc regulated (10Vdc for XRE), jumper selectable

Transducer Input Signal:

500 mVdc at rated load (1.00 Vdc for XRE)

Zero Range: Minimum 95% of transducer rating

Calibration Range: Minimum 50:1

Ambient Temperature Range:

32° F to 104° F (0° C to 40° C)

Weight:

0.5 lbs to 2.0 lbs (0.23 kg to 0.91 kg) depending on
configuration

Optional Tension Meter

Analog, 1 mA, 3.5" (DFE P/N 722-1385) or meter in
enclosure if CE mark is needed (DFE P/N 723-1453)

Standard Scales for Optional Remote Tension Meter:

0 to 1, 5, 10, 25, 50, 100, 150, 250, 500, 1000

ACCESSORIES

Tension Meter. Analog, 1 mA, Must be installed by user. DFE Part# 722-1385. This meter also available in its own enclosure (DFE Part# 723-1453) and requires a separate cable (DFE Part# 721-0967).

Nonstandard Meter Scale. Any other meter scale than the standard ones offered.

Spring Clamp Mating Terminal Block. Allows connection of external wiring without removal of cover in V version. (DFE P/N: 721-2152) Alternative to the standard Screw Clamp mating connector.

ORDERING INFORMATION

You may order the TI17C or the TI18C by description or by specifying the code below by matching each labeled digit with your choice.

Examples: TI17CV - DRC, TI18CH - I420

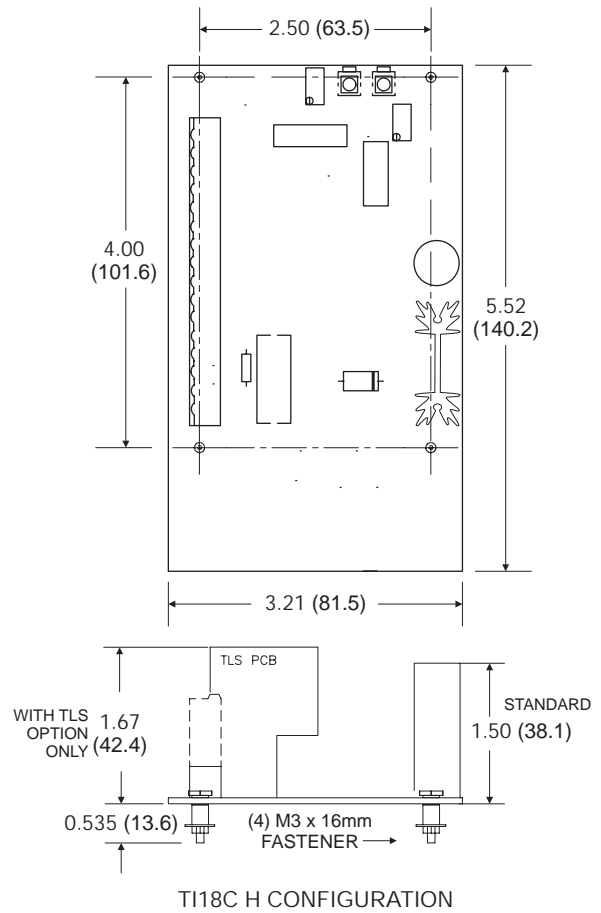
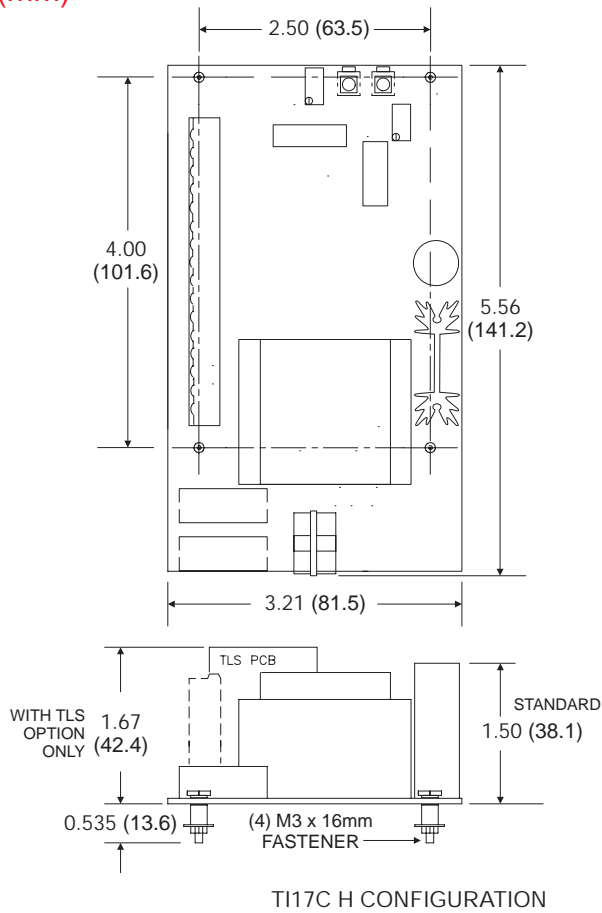
TI17C	X	-	OPTIONS (Separated by commas)
or TI18C			
	<u>Mounting Style</u>		
	H = Horizontal Card only		230 = 230Vac Input ¹
	V = Card in vertical mounting bracket.		25CW = 25% Calibration Weight
			AZ = Auto Zero
			COV = Cover ^{2, 4}
			DRC = Din Rail Clip ²
			I420 = Isolated 4 to 20mA Output
			TLS = Tension Limit Switch
			XRE = Extended Range ³
			Z = Special (SPR)

NOTES:

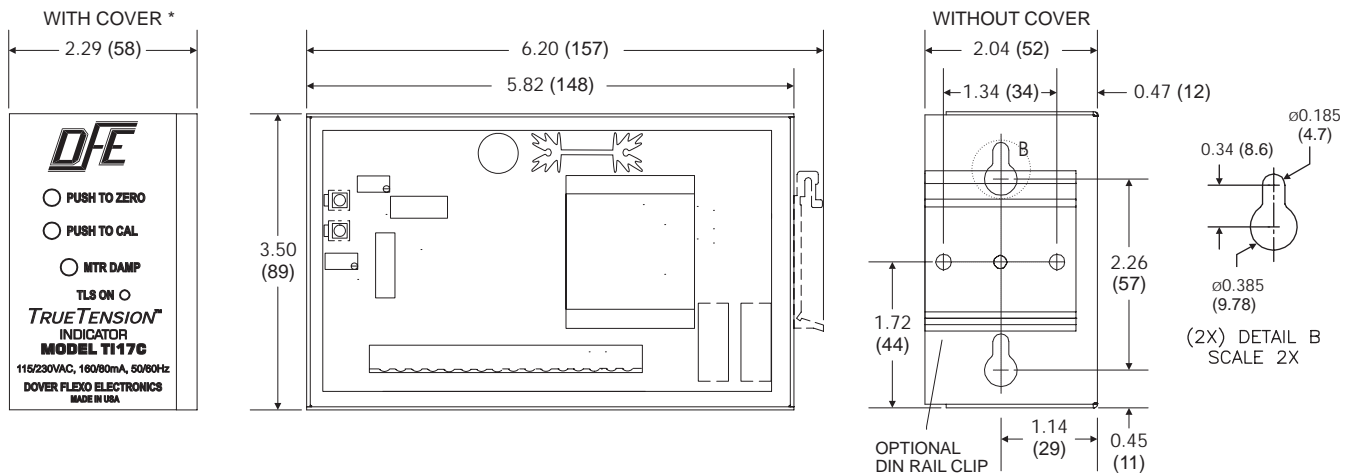
1. TI17C only.
2. V configuration only.
3. XRE option requires that transducers have XR option.
4. This option required for CE-mark compliance of TI17CV

DIMENSIONS
inches (mm)

HORIZONTAL MOUNTING



VERTICAL MOUNTING



TI17C and TI18C V VERSIONS (dimensions are the same for both)

* The TI17C is CE marked in its vertical configuration with cover.
The TI18C is CE marked in all configurations.