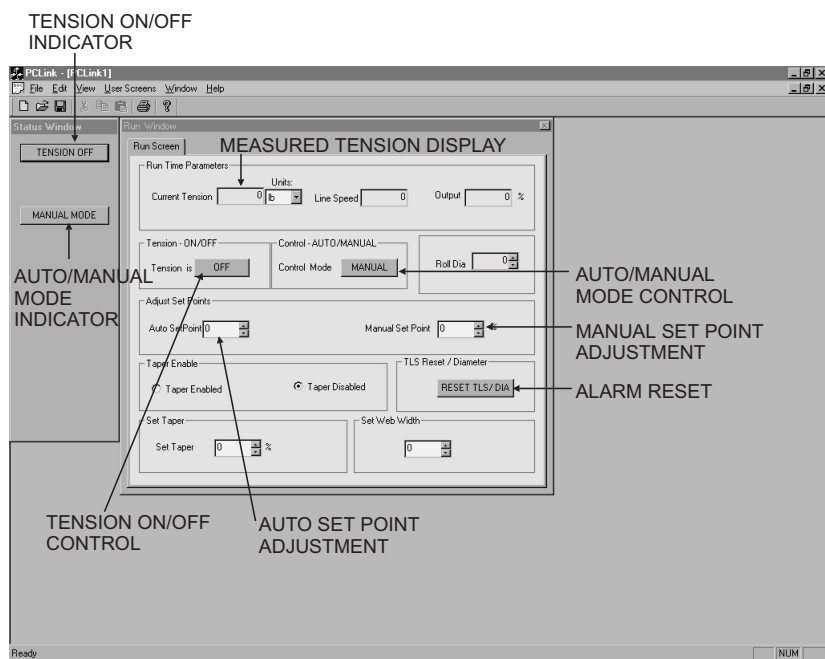


## PCLink User Interface



If you have any questions, please contact our  
Technical Service Department  
DOC 801-1478

## QUICK START OPERATOR INSTRUCTIONS FOR TENSION MANAGER™

NOTE: Controller must be installed and calibrated prior to operation

Features Common to all versions of User Interfaces:

**Tension Display** - The actual measured tension is displayed on a meter, an LCD digital display, or the screen of a notebook or laptop. The operator can compare this to the desired tension, and determine whether the machine is working correctly or whether it needs further adjustment.

**Tension On/Off control** - A control which allows the operator to choose whether the controller's output is enabled. Tension is typically turned Off when tension control is not required, such as when the machine is first turned on or when changing rolls. Tension is turned On when the operator wishes to control tension for good product quality.

**Auto / Manual Mode control** - A control which allows the operator to switch between Auto and Manual modes. Manual mode is typically used when setting up a new roll, while Auto mode is used to provide constant tension during continuous processing.

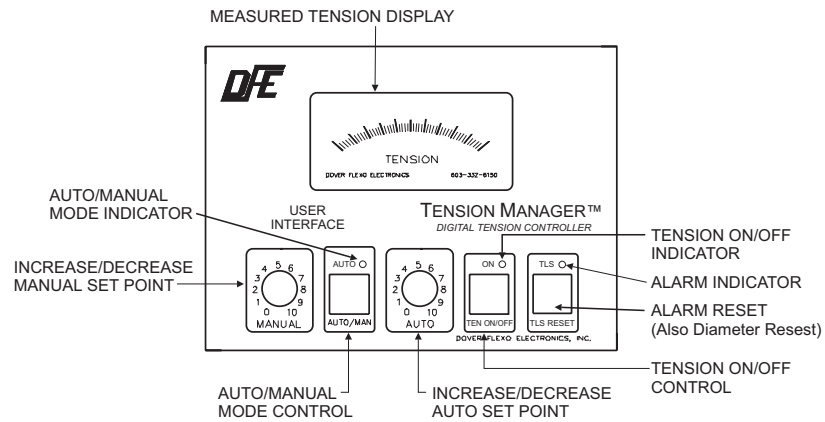
**Auto / Manual set point indicator** - shows Auto and/or Manual set point which you have given to the controller.

**Tension On / Off indicator** - shows whether the controller's output is enabled or disabled.

**Manual Setpoint adjustment** - allows the operator to choose the desired controller output, which can be varied manually to produce a particular tension value.

**Auto Setpoint adjustment** - allows the operator to choose the desired tension, which when in Auto mode the controller attempts to hold constant by automatically varying its output.

## Standard User Interface



## RCT Interface

